

C&O Standard Brick Cabin Instruction Manual



HO Cabin at the west end of Huntington - a classic example of a C&O Standard Cabin brick cabin.

changes and or variations. This kit is designed to allow one to build a model of A cabin at Alleghany, including the distinctive brick pattern, with little extra modifications. The builder should consult photos of the actual cabin they wish to build to determine what variations they may need to include.

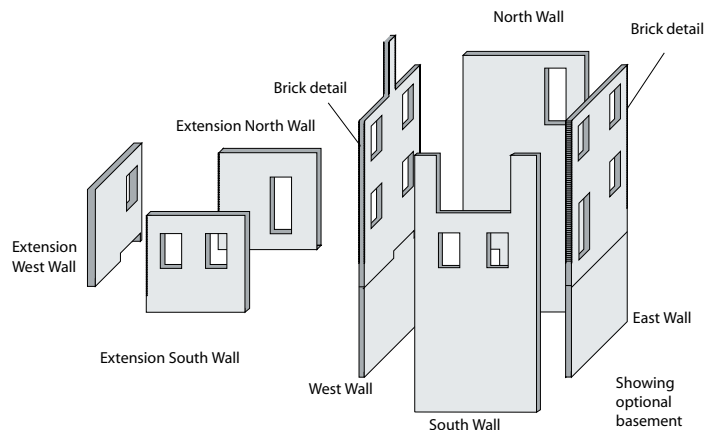
An experienced modeler should expect to spend about 5 to 8 enjoyable hours for assembly and painting. If you have any questions please contact us at info@alkemscalemodels.com

2. Pre-paint Wood Parts

It is easiest to pre-paint the wood parts before removing them from the fret. Spray the wood parts with flat white primer. Use several light coats, letting the paint dry between coats. If grain is visible, sand carefully with fine sandpaper and spray again. Be very careful as some parts are very fragile. Set these parts aside to dry and proceed to build the acrylic shell.

3. Assemble the Acrylic Walls for the Main Structure.

Glue the four main walls together. Use Plastruct Bondene or other cement designed for acrylic plastic. Many styrene cements don't work on acrylic. Note brick detail on the ends of east and west walls. Make sure that the brick detail is exposed when the

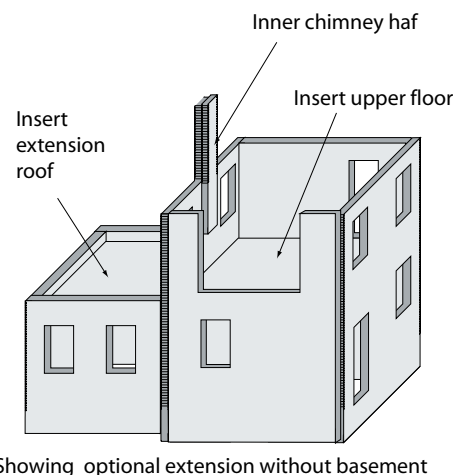


walls are glued together.

Glue the upper floor as shown. The floor will help square up the structure. Pay close attention to the joints to clean up any glue marks or seeps.

Next glue the inner half of chimney to the outer half. Note the orientation of the brick details.

Add the brick extension if desired. Don't use the basement if you use the brick extension. The basement should be used in



List of parts:

- 1 sheet of laser cut acrylic parts with engraved brick patterns
- 1 sheet of 1/32nd inch laser cut plywood
- 1 sheet of 1/64th inch laser cut plywood
- 1 sheet of laser cut and printed self-adhesive paper
- 1 sheet clear acetate for window glazing

Recommended tools and supplies

- Xacto knife with sharp number 11 blade
- Plastruct Bondene ABS or other acrylic glue
- CAA glue
- Fine wet sandpaper (400 or 600 grit)
- Tweezers
- Primer- white
- Paints - acrylic or enamels
 - Concrete
 - Brick Red
 - Flat Black
 - Flat White
 - Medium Gray
 - Steel
- Masking Tape

1. General Overview

This kit combines precision laser cut acrylic and wood parts to make a highly detailed model of the C&O Standard Brick Cabin. The kit includes parts to allow construction of the standard cabin plus the extension as used at Alleghany. Alternatively, there are parts to add a concrete basement used when the cabin is situated on sloped ground such as at CW cabin. Although the design is a standard, the actual cabins built often had minor

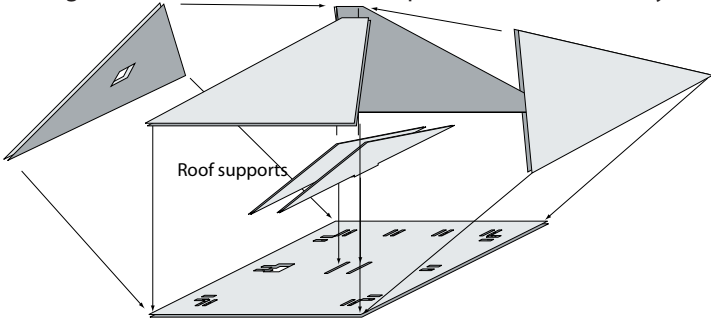
situations where the ground slopes. If you opt to use the basement, glue the basement walls to the upper walls. Use gap filling CAA or putty to hide the seams. Use masking tape to protect the brick detail while you sand the putty in the gaps flush.

Let the glue dry for a couple hours., then paint the structure. The bricks should be a dark red with light tan mortar. The basement walls and window sills should be a concrete color.

4. Assemble the Roof

Assemble the roof as shown in the drawing below. First insert the roof support tabs into the corresponding holes in the roof base. Make sure they are plumb and square.

Next glue the north and south roof panels. Make sure they are



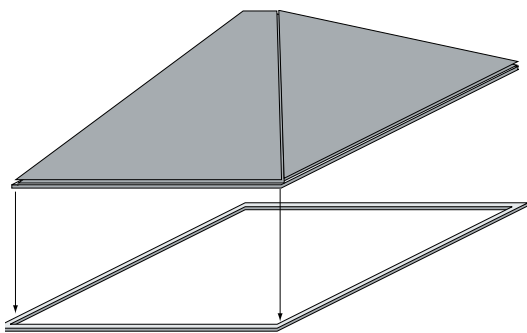
centered on the roof base and touch the apex of the roof supports.

Add the east and west roof panels taking care to align the chimney holes on the west roof panel and the roof support.

Make sure the wood is free of dust, then apply the self adhesive shingle paper to the roof panels. Trim the excess. Burnish the seams with your finger to ensure a good bond with the wood.

Glue the gutter around the roof ensuring that the shingles are above the gutter line. The gutter should be flush with the bottom of the roof base.

Turn the roof over and apply the roof corbels. There are 24 of

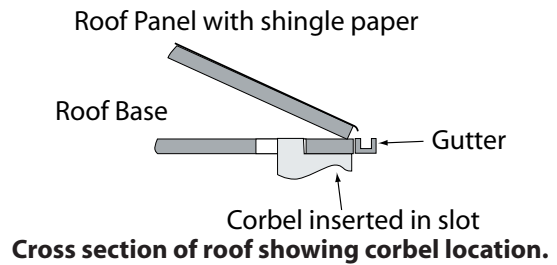


Adding Gutter to assembled roof.



Abandoned A Cabin in March 2004. The brick extension is in the foreground.

these. Insert the tab of the corbel into the corresponding slot and slide forward until the end of the corbel is flush with the edge of the roof. Test fit the roof on the structure to make sure the corbels fit correctly.

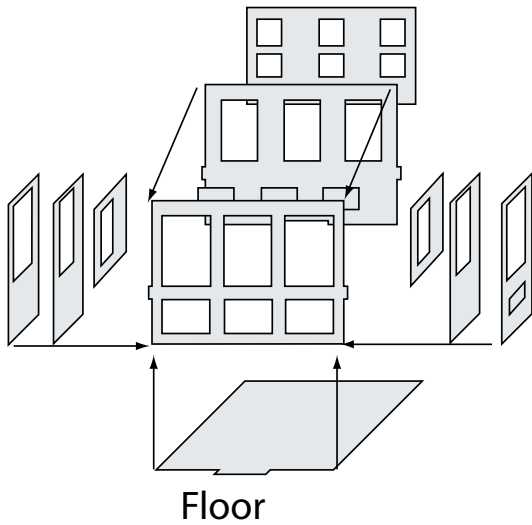


Cross section of roof showing corbel location.

5. Assemble the Doors and Windows

The windows and doors are made using multiple layers of laser cut 1/32nd inch plywood parts. Use the diagrams below to guide you through the assembly. The elevation drawings will help you locate the windows on the structure. Be careful when installing the windows as there are two types, but they are the same overall size. Ensure you have the right one for the location.

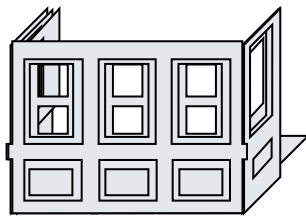
Assemble the bay window as shown in the drawing. Note that the side windows have one post thicker than the other. The thicker post goes to the rear of the bay window. The floor has a tab that will help align the inner wall. The remaining of the layers should be placed so that the windows frame reveals are evenly



Floor
Bay window layer assembly.

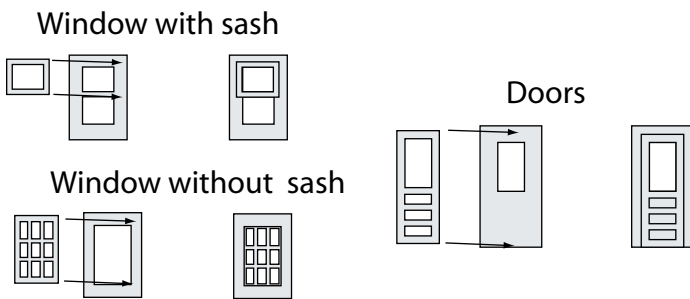
spaced.

The final bay window assembly looks like the diagram below. Note that there is no top part. The roof base will act as the top.



Bay window assembled.

Test fit the bay window in the hole on the south wall. Adjust the fit if required before the glue on the parts is fully dried. Install pieces of clear acetate on the inside to simulate glass. Use thin CAA or white glue to secure the acetate.



Next assemble the windows. They have two layers plus the acetate. Center the outer layer on top of the inner layer. Add acetate behind.

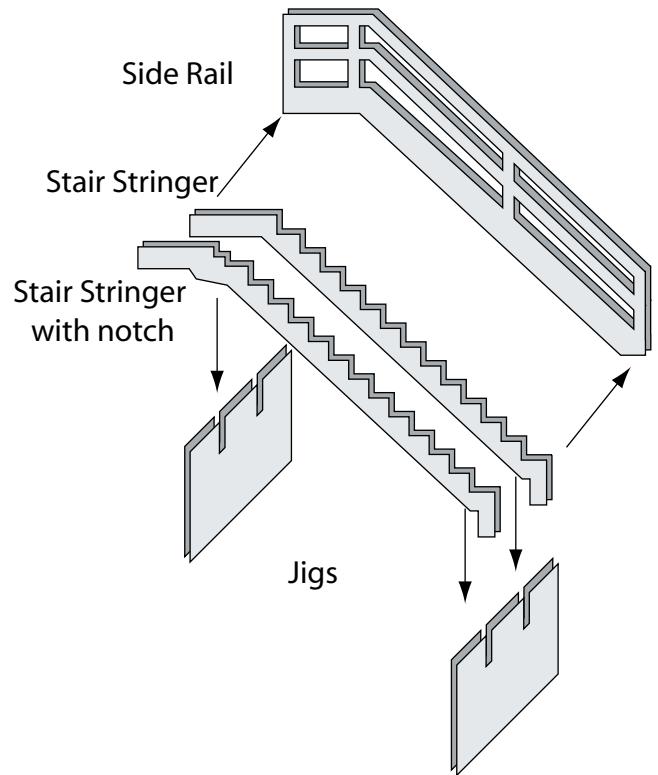
The doors are made in a similar manner. The door should be placed so that the inner layer is flush with the bottom of the door. Install acetate to the door window. Install the doors and windows on the structure.

6. Assemble the Stairs

To help assemble the external stairs we have provided two jigs, These will help hold the stair stringers in place while you add the steps.

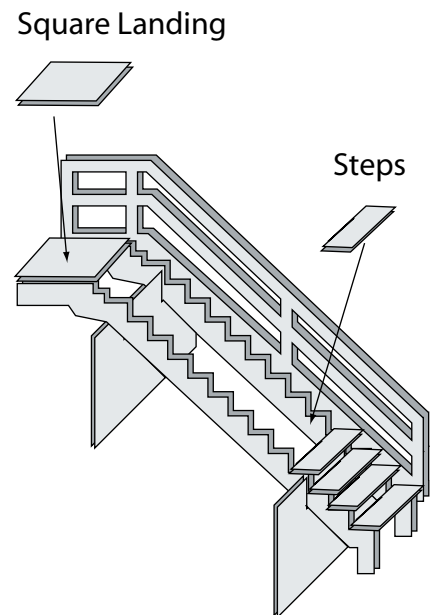
First glue the stair stringers to the side rails. These parts are fragile. We have included extra stair stringers in case you break one during assembly. Be careful - glue the stair stringer, not the stair stringer with notch to the hand rail. Insert the completed stair stringer-rail in the jig. Place the stair stringer with notch in the other side of the jig.

Glue the square landing to the side rail as shown. Glue the first step in place at the bottom. Check that all is square and true. Let



the glue dry. Then add the steps one at a time. Use tweezers to add the steps.

Let the glue dry, then remove the jigs.



Glue the upper rail to the lower stair assembly. Make sure the rails line up and that the joint is square. Glue the upper stair stringer to the upper rail. It will butt join the lower stair stringer with notch.



Insert the upper stair stringer with tab into the notch on the lower stair stringer with notch. Glue the upper landing in place making sure that all is aligned and square. Finally, glue the last three steps to the upper stair stringers.

Let the glue dry and paint. These should be a dull grey-silver color.

6. Final Assembly

Using the elevation drawings as a guide, glue the stairs to the structure. Glue the stair diagonal braces as shown in the elevations.

Glue to bay window to the structure. The front of the bay window should be flush with the edge of the roof support above it. Glue four corbels under the bay window. Note these are different from the corbels under the roof. We have provided extra corbels in case you lose one or two during construction.

Add the rain down spouts as shown.

Add the chimney caps found on the 1/32nd inch sheet. Build them up as shown making sure the center hole is aligned.

Glue the gutter to the brick extension if you used it.

There are parts to build a second stair case if you used the optional basement. Use assembly steps as described above for this stair case.

7. Other detailing ideas

Use small pieces of off-white paper to simulate shades in the windows.

Glue some of the windows with the sash in a open position.

Add a Alkem Scale Models train order board in front of the cabin. Add telephone and power wires to the cabin.

Add a station sign (we have included some on the elevation drawing) to identify your cabin. Or you can create a custom sign for your own station designation to display on the cabin.

Make the roof removable to display a detailed interior.

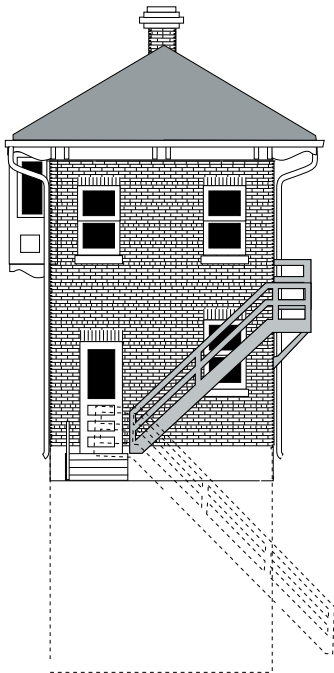


Photos of completed models showing three options in assembly: From left to right: with basement, with brick extension and unpainted with out extension.

Elevation Drawings



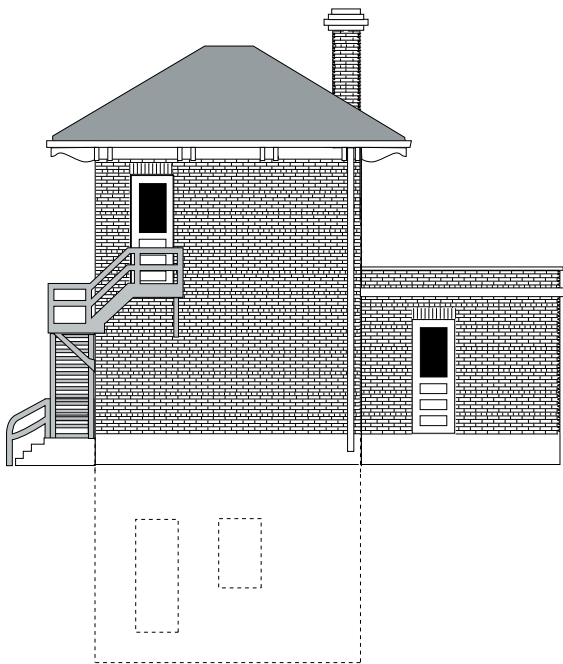
C&O Standard Brick Cabin Showing optional extension and basement.



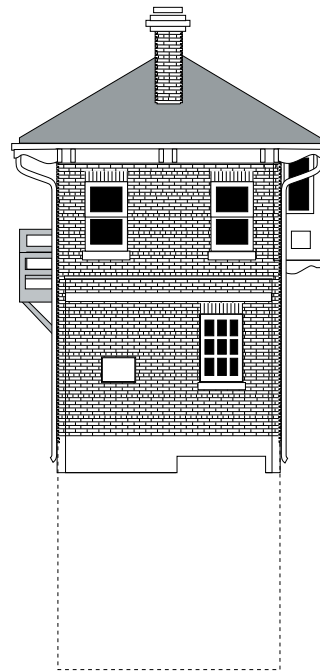
East Elevation



South Elevation



North Elevation



West Elevation

Station Signs

A	A
CW	CW
G	G
HN	HN
HO	HO
DK	DK
NC	NC
NJ	NJ
MW	MW
NJ	NJ

Partial List of C&O Standard Brick Cabins and notes

A - Alleghany, VA - brick extension and creek under cabin.
 CW - Hinton, WV - 3 story ground slopes up at rear.
 DK - Huntington, WV
 G - Gordonsville, VA
 HN - Doswell, VA - non standard stairs
 HO - Huntington, WV

KC - Covington, KY -3 story brick with large extension

NC - Ashland, KY

NJ - Limeville, KY

RU - Russell Yard, KY - Non standard extension on front for yard clerks

MW - Hilldale, WV - brick extension like A cabin

Prototype photos for additional modeling ideas



Left: RU cabin at Russel had a non-standard addition on the front for yard clerks.



Above: G Cabin at Gordonsville
Left: NJ Cabin at Limeville, KY
Below: Rear view of completed N Scale Models

